

THE DARK EYED ONE,

as Sung by M^r. HORN, in the

MAGIC FLUTE,

Composed by

AUBER,

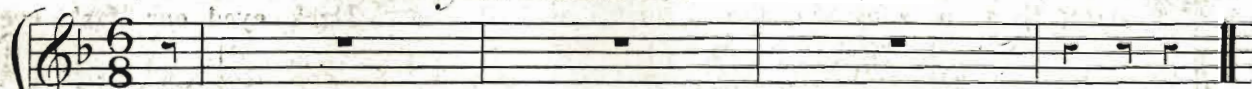
Arranged for the Spanish Guitar

BY

S. KEENE.

New York Published by E. RILEY, 29 Chatham St.

VOICE.



ANDANTE GRAZIOSO.

GUITAR.



Dark Eyed one dark eyed one come hither to me I'll sing thee a song 'neath the

Tam-a-rind tree The queen of the gar-den the ru-by lipp'd rose on her

(2)

em_e_rald throne by the riv_u_let glows. Come hither my rose-bud and

shame the proud flower, Out-blush the gay queen in her own gaudy bower I'll

sing thee a song and the bur_den shall be, Dark eyed one dark eyed one I

languish for thee.

2

So laden with sweets is each sigh of the gale,
 I'm sure my belov'd is crossing the vale,
 The tulip is quaffing his cup full of wine,
 The turtle is murmuring vows to the pine,
 O waste not the moments so precious to love,
 Come drink with the tulip and court with the dove
 I'll sing thee a song and the burden shall be,
 Dark eyed one dark eyed one I languish for thee.

(Guitar. Dark eyed one. 2)

X 00 78 2/2